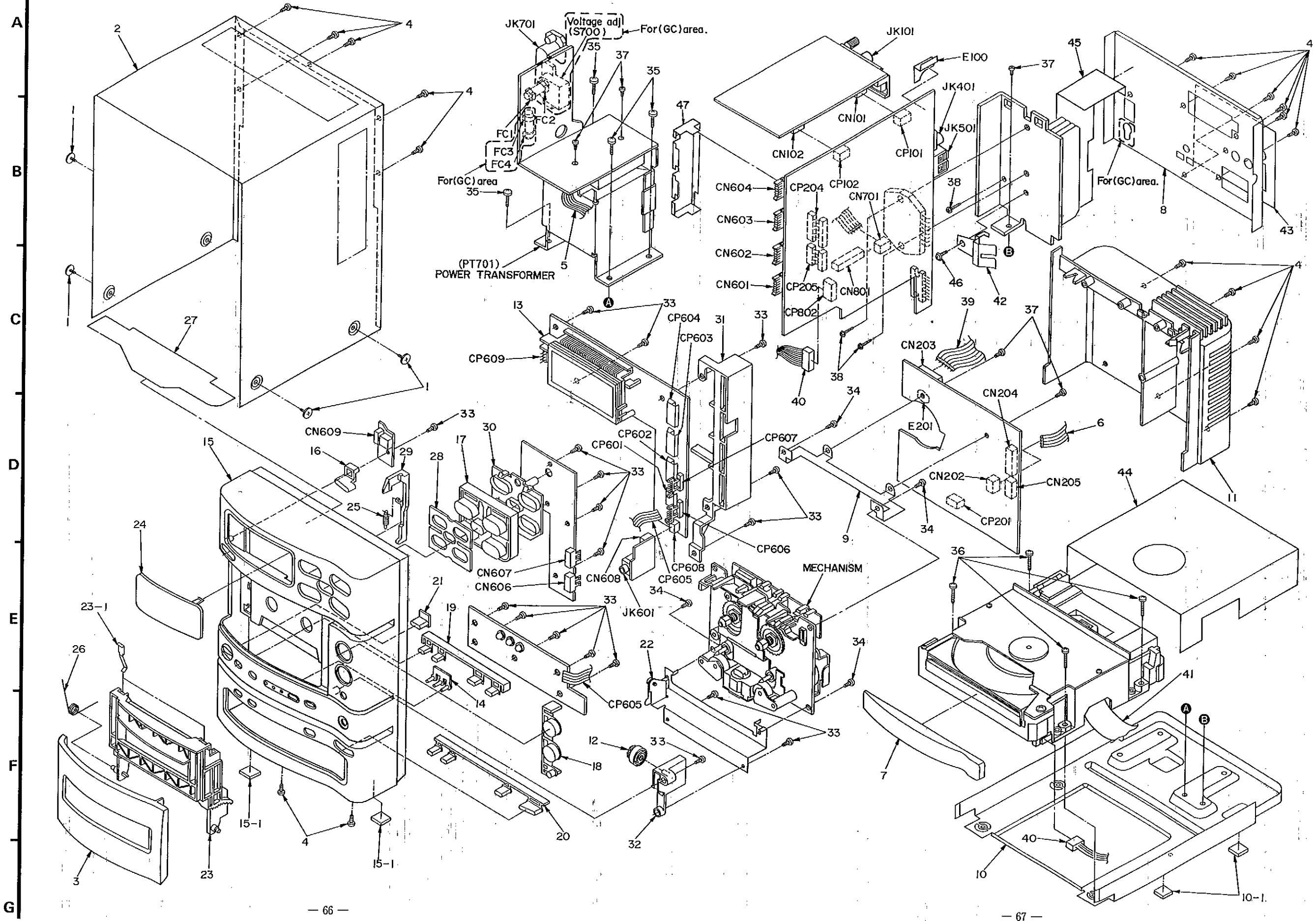


### CABINET PARTS LOCATION



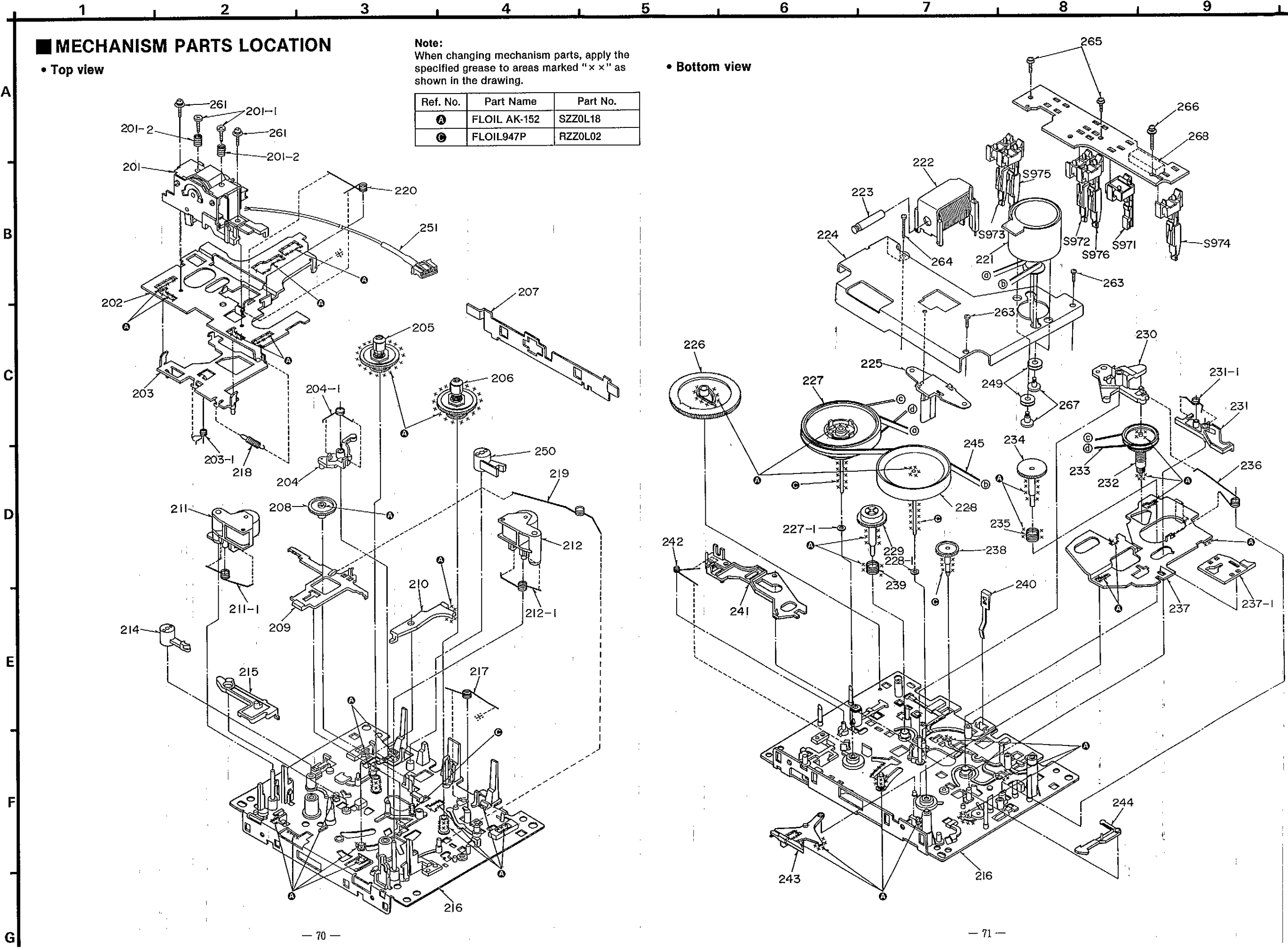
### REPLACEMENT PARTS LIST

**Notes:** \*Important safety notice:  
 Components identified by Δ mark have special characteristics important for safety. Furthermore, special parts which have purposes of fire-retardant (resistors), high-quality sound (capacitors), low-noise (resistors), etc. are used. When replacing any of components, be sure to use only manufacturer's specified parts shown in the parts list.  
 \*The parenthesized indications in the Remarks columns specify the areas. (Refer to the cover page for area.)  
 Parts without these indications can be used for all areas.  
 \*The "(SF)" mark denotes the standard part.  
 \*Remote Control Ass'y:  
 Supply period for three years from termination of production.  
 \*Warning: This product uses a laser diode. Refer to caution statements on page 3.  
 \*ACHTUNG: Die Lasereinheit darf nur gegen eine vom Hersteller spezifizierte Einheit ausgetauscht werden.  
 Die Lasereinheit darf nur gegen eine vom Hersteller spezifizierte Einheit ausgetauscht werden.

Ref. No.	Part No.	Part Name & Description	Remarks	Ref. No.	Part No.	Part Name & Description	Remarks
CABINET AND CHASSIS							
1	RHD3007	SCREW		35	XTB3+6FFZ	SCREW	
2	RMD227-K2	CABINET		36	XTB3+8FFZ	SCREW	
3	RYFD224A-K	CASSETTE COVER ASS'Y		37	XTB3+8JFZ	SCREW	
4	XTB3+8JFZ1	SCREW		38	XTW3+15T	SCREW	
5	REZ0589	CONNECTOR (5P)		39	RWJ5710140XX	CONNECTOR ASS'Y (10P)	
6	RWJ1804150XX	CONNECTOR ASS'Y (4P)		40	REX0538	CONNECTOR (5P)	
7	RGD0584-K	TRAY ORNAMENT		41	REZ0548	FPC BOARD (23P)	
8	RGD0174A-B1	REAR PANEL	(E, EB, EG)	42	RMC0158	TRANSISTOR HOLDER	
8	RGD0174B-A1	REAR PANEL	(GC)	43	RWV0064	SHEET	
8	RGD0174A-C1	REAR PANEL	(GN)	44	RWV0067-1	CD MECHANISM COVER	
9	RMA0702	P. C. B. ANGLE		45	RWV0068-1	SHIELD PLATE	
10	RFKJACH150EK	BOTTOM CHASSIS ASS'Y		46	XTW3+8T	SCREW	
10-1	SHG1654	FOOT		47	RMD0228	SHIELD PLATE	
CASSETTE MECHANISM							
11	RFKHACH150E	HEAT SINK COVER ASS'Y	(E)	201	RXQ0291	HEAD BLOCK (REC/PLAYBACK)	
11	RFKHACH150EB	HEAT SINK COVER ASS'Y	(EB, GN)	201-1	RHE51522B	HEX SCREW	
11	RFKHACH150EG	HEAT SINK COVER ASS'Y	(EG)	201-2	RMB0331	HEX SPRING	
11	RFKHACH150GC	HEAT SINK COVER ASS'Y	(GC)	202	RUA793ZF	HEAD BASE	
12	RDG0201	DAMPER GEAR		203	RZLAR300A	ROD	
13	RMD0223	FL HOLDER		203-1	RW143ZA	SPRING	
14	RGLD194-Q	PANEL LIGHT		204	1UB0089ZA	ARM	
15	RFKHACH150-K	FRONT PANEL ASS'Y		204-1	RW148ZA	SPRING	
15-1	SIG1654	FOOT		205	1DM00182B	REEL TABLE (R)	
16	RGU0896-K	POWER BUTTON		206	1DM00172B	REEL TABLE (F)	
17	RGU0897-K	ILLUMINATION BUTTON		207	RML0069-1	LEVER	
18	RGU0898-K	VOLUME BUTTON		208	RDG5772ZC	GEAR	
19	RGU0899-K	CASSETTE DECK BUTTON		209	RUB5082B	BRACKET ROD	
20	RGU0900-K	CD PLAYER BUTTON		210	RUB5062B	LEVER	
21	RGU0901-K	EJECT BUTTON		211	1UB00882B	PINCH ROLLER (R)	
22	RFKHACH150AK	MECH. ANGLE ASS'Y		211-1	RMB0310	SPRING (R)	
23	RFKLACH150-K	CASSETTE HOLDER ASS'Y		212	1UB00872B	PINCH ROLLER (F)	
23-1	RUS757ZA	HALF PUSH SPRING		212-1	RW140ZC	SPRING (F)	
24	RMD275A-Q	FL WINDOW		214	RNL12D	DAMPER ARM	
25	RMB0141	EJECT ROD SPRING		215	RUB5032D	MAIN LEVER	
26	RMB0253	OPEN SPRING		216	RFKRAA0320	CHASSIS ASS'Y	
27	RFKHACH150BK	SHIELD PLATE ASS'Y		217	RW1422A	SPRING	
28	RWF0173	CONDUCTION PLATE		218	RJD1052A	SPRING	
29	RMD105	EJECT ROD		219	RW1442A	SPRING	
30	RMD224	LCD HOLDER		220	RW1392A	SPRING	
31	RMD0684-K	P. C. B. HOLDER		221	RFM1332A	DC MOTOR	
32	RMS0407	DAMPER GEAR HOLDER		222	1UED0152B	PLUNGER	
33	XTB3+8J	SCREW		223	RUB4282E	MOVING IRON CORE	
34	XTB3+10JFZ	SCREW		224	RMA0102-1	ANGLE	

Ref. No.	Part No.	Part Name & Description	Remarks
225	RMD5014ZC	ANGLE	
226	RDG5927ZG	MAIN GEAR	
227	1DW00372B	FLYWHEEL (F)	
227-1	RNW139ZA	WASHER	
228	1DW00382B	FLYWHEEL (R)	
228-1	RNW138ZA	WASHER	
229	1DG0006ZB	REEL TABLE GEAR	
230	RUB513ZD	ARM	
231	1UB0091ZA	LEVER	
231-1	RUW146ZA	SPRING	
232	1DR0011ZB	MAIN PULLEY	
233	RDV902B	BELT	
234	RDG5769ZA	REEL TABLE GEAR	
235	RUQ111ZB	SPRING	
236	RUW145ZA	SPRING	
237	1UB0090ZA	ROD	
237-1	RUB512ZB	ROD	
238	RDG5773ZB	GEAR	
239	RUQ112ZA	SPRING	
240	RUS609ZC	TAPE PRESSURE SPRING	
241	RUB514ZC	LEVER	
242	RUW147ZA	SPRING	
243	RUB515ZA	LEVER	
244	RUB509ZA	LEVER	
245	RDV108ZA	CAPSTAN BELT	
249	RHG3032ZA	RUBBER CUSHION	
250	RNL180ZB	DAMPER ARM	
251	REX0059	LEAD WIRE (GP)	
261	XTW2+6L	SCREW	
263	XTN26+7J	SCREW	
264	RHE5203ZA	SCREW	
265	XTW2+8S	SCREW	
266	XYC2+JF16	SCREW	
267	RHD26002	SCREW	
268 (J971)	RJS10T7ZA	SOCKET (10P)	
		PACKING MATERIAL	
P1	RPG1749	PACKING CASE (SA-CH150)	(E, EG)
P1	RPG1750	PACKING CASE (SA-CH150)	(EB)
P1	RPG1751	PACKING CASE	(GC, GN)
P1	RPG1867	PACKING CASE (SB-CH150)	(E)
P2	RPN0713	CUSHION	(GC, GN)
P2	RPN0748	CUSHION (SA-CH150)	(E, EB, EG)
P3	RPQF0098	ACCESSORIES BOX	
P4	RPQ0366	PAD	(GC, GN)
P5	RPN0749	CUSHION (SB-CH150)	(E)
P6	RPH0136	MIRROR SHEET (SB-CH150)	
		ACCESSORIES	
A1	RFKSACH150E	INSTRUCTION MANUAL ASS'Y	(E)

Ref. No.	Part No.	Part Name & Description	Remarks
A1	RQT2133-B	INSTRUCTION MANUAL	(EB, GN)
A1	RQT2132-E	INSTRUCTION MANUAL	(EG)
A1	RQT2131-G	INSTRUCTION MANUAL	(GC)
A2	RQA0013	WARRANTY CARD	(E, EB, EG)
A2	RQX7433ZA	WARRANTY CARD	(GN)
A3	RQCB0189	SERVICENTER LIST	
A4	RJAD019-2K	AC POWER SUPPLY CORD	(E, EG, GC) Δ (SF)
A4	RJA0733	AC POWER SUPPLY CORD	(EB) Δ (SF)
A4	RJA0036-K	AC POWER SUPPLY CORD	(GN) Δ (SF)
A5	RSAD007	FM INDOOR ANTENNA	(E, EB, EG)
A5	RSAD006	FM INDOOR ANTENNA	(GC, GN)
A6	RSAD009	LW/MW LOOP ANTENNA	
A7	RKFO328-K	BACK COVER	
A8	RAK-CH910WK	REMOTE CONTROL TRANSMITTER	
A9	SJP9009	ATTACHMENT PLUG	(EB) Δ
A10	REED499	SPEAKER CORD	
A11	SJP5213-2	POWER PLUG ADAPTOR	(GC) Δ
A12	RQLAD134	VOLTAGE CAUTION LABEL	(GC)

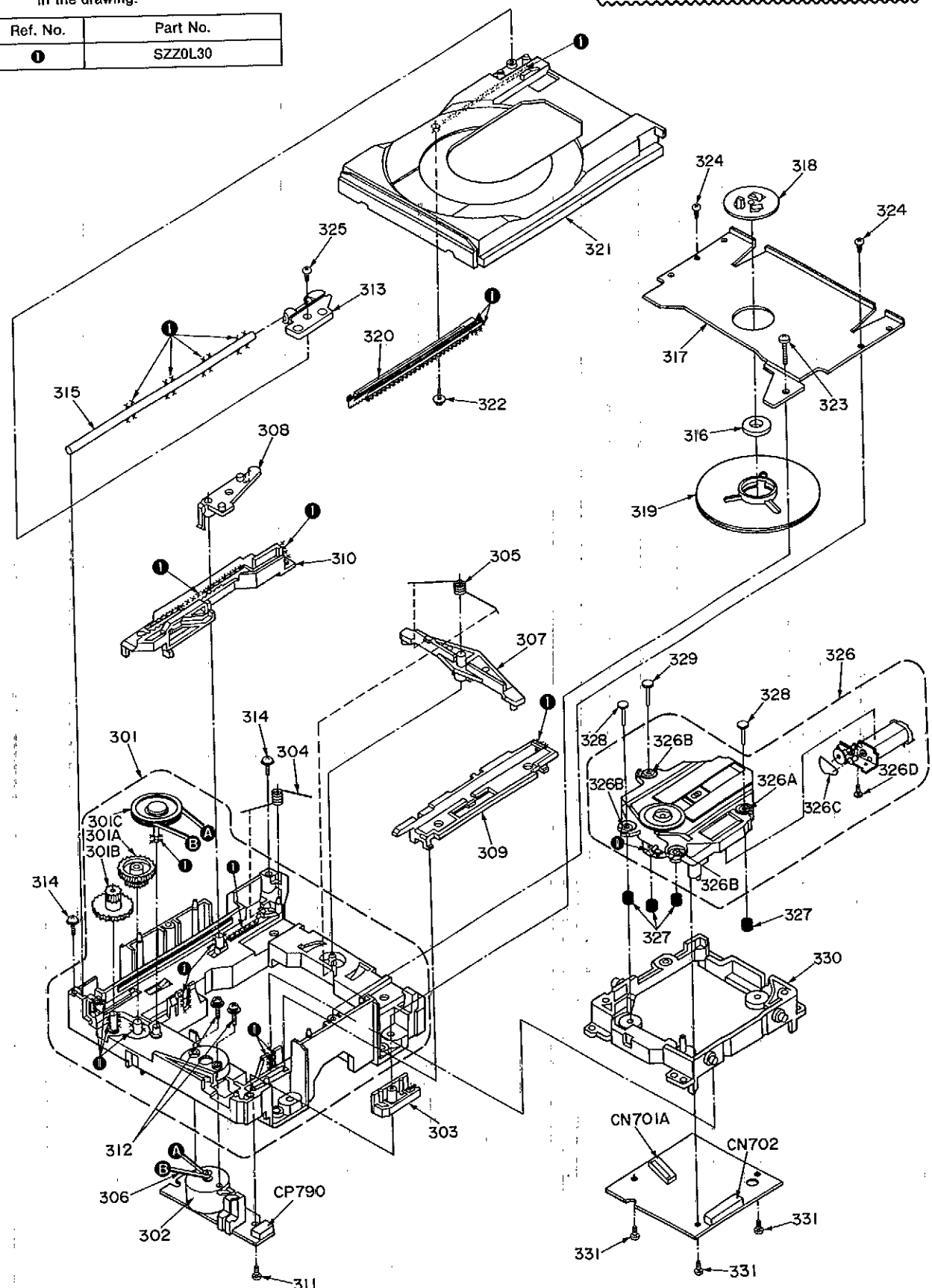


**LOADING PARTS LOCATION**

Note: When changing loading mechanism parts, apply the specified grease to the areas marked "x" as shown in the drawing.

The parts enclosed in the dotted boxes are supplied as a block assembly. Therefore, they are not supplied separately except parts indicated with Ref. No.

Ref. No.	Part No.
1	SZZ0L30



**REPLACEMENT PARTS LIST**

**Notes:** \*Important safety notice: Components identified by Δ mark have special characteristics important for safety. Furthermore, special parts which have purposes of fire-retardant (resistors), high-quality sound (capacitors), low-noise (resistors), etc. are used. When replacing any of components, be sure to use only manufacturer's specified parts shown in the parts list. \*The parenthesized indications in the Remarks columns specify the areas. (Refer to the cover page for area.) Parts without these indications can be used for all areas. \*Warning: This product uses a laser diode. Refer to caution statements on page 3. \*ACHTUNG: Die Lasereinheit nicht zerlegen. Die Lasereinheit darf nur gegen eine vom Hersteller spezifizierete Einheit ausgetauscht werden.

Ref. No.	Part No.	Part Name & Description	Remarks	Ref. No.	Part No.	Part Name & Description	Remarks
LOADING UNIT				INTEGRATED CIRCUIT(S)			
301	RFKJLPG440BK	TRAVERSE CHASSIS ASS'Y		IC101	LA1830-H	FM/AM IF AMP./AM OSC	
301A	RDC0142	INTERMEDIATE GEAR		IC102	LC7218	PLL FREQ. SYNTHESIZER	
301B	RDC0193	DRIVE GEAR(1)		IC200	AN6558SFE2	PRE AMP	
301C	RDP0065	INTERMEDIATE PULLEY		IC201	M51167BFP-TB	P. B EQ/REC AMP	
302	REMO019	LOADING MOTOR ASS'Y		IC202	BA7755A	R/P SELECT	
303	RMAD339	TRAY HOLDER		IC203	CXA1102M-T4	DOLBY NR	
304	RME0063	LOCK LEVER SPRING		IC205	XLU2040F-T1	SYSTEM CONTROL	
305	RME0087	ASSISTANCE SPRING		IC401	MC14052BF2	INPUT SELECTOR	
306	RMGD158	BELT		IC402	BA4558FDK1	BUFFER AMP	
307	RML0177	CONVERSION LEVER		IC403	AN6554NSFE2	SUBR/KARAOKE	
308	RML0178-1	LOCK LEVER		IC404	M51137FP-E1	ASP	
309	RMMD059-1	SLIDE PLATE (2)		IC405	BA4558FDK1	BUFFER AMP	
310	RMMD079	SLIDE PLATE (1)		IC501	SV13101D	POWER AMP	Δ
311	XTN26-6G	SCREW		IC551	MS218L	HEADPHONES AMP	
312	XYN2-F6F2	SCREW		IC601	MND2416RLA43	SYSTEM CONTROL/PL DRIVE	
313	RDB0036	GUIDE SHAFT HOLDER		IC701	BA392Q	POWER SUPPLY CONTROL	Δ
314	RHD20010	SCREW		IC790	TA7291S	MOTOR DRIVE	
315	RMJ0046	GUIDE SHAFT		IC801	XLU2040F-T1	SYSTEM CONTROL	
316	RHM2452A	MAGNET		IC971	DN6851ALB	HALL	
317	RFKNACH350EK	CLAMP PLATE ASS'Y	(E)				
317	RFKNLPG440GC	CLAMP PLATE ASS'Y	(EB, EG, GC, GN)			TRANSISTOR(S)	
318	RMRO334	FIXED PLATE		Q101, 102	2SC2787L	TRANSISTOR	
319	RKQ0123	MAGNET HOLDER ASS'Y		Q103, 104	2SC2785FE	TRANSISTOR	
320	RFKNLPG440-K	DRIVE GEAR(2) ASS'Y		Q106	UN411FTA	TRANSISTOR	
321	RGC0088-K	DISC TRAY		Q107, 108	2SC3311A1RTA	TRANSISTOR	
322	RHD20009-1	SCREW		Q191-193	2SC3311A1RTA	TRANSISTOR	
323	XTB3+25GFZ	SCREW		Q201-204	2SJ164PQRTA	TRANSISTOR	
324	XTN26-6G	SCREW		Q207, 208	UN4210-S	TRANSISTOR	
325	XTN3+8JFZ	SCREW		Q211-214	UN4210-S	TRANSISTOR	
326	RAED111Z	TRAVERSE DECK ASS'Y		Q215, 216	2SD1450RTA	TRANSISTOR	
326A	SHGD112	FLOATING RUBBER(A)		Q217-220	2SC3311A1RTA	TRANSISTOR	
326B	SHGD113-1	FLOATING RUBBER(B)		Q251, 252	UN4210-S	TRANSISTOR	
326C	RVD0023	BELT		Q253, 254	2SC1740SLNET	TRANSISTOR	
326D	SNSD38	SCREW		Q271	2SD1450RTA	TRANSISTOR	
327	RME0109	FLOATING SPRING		Q272, 273	UN4210-S	TRANSISTOR	
328	RMS0123-1	FIXED PIN (A)		Q274	2SC3311R	TRANSISTOR	
329	RMS0350	FIXED PIN (B)		Q275, 276	2SD1450RTA	TRANSISTOR	
330	RMRO533-K	TRAVERSE CHASSIS		Q279, 280	2SC2784FETA	TRANSISTOR	
331	XTV2-6G	SCREW		Q281, 282	UN411FTA	TRANSISTOR	
				Q283	UN4215	TRANSISTOR	
				Q284	KSB564ACYGTA	TRANSISTOR	
				Q285	2SD965Q	TRANSISTOR	
				Q401	UN4115	TRANSISTOR	

Ref. No.	Part No.	Part Name & Description	Remarks	Ref. No.	Part No.	Part Name & Description	Remarks
Q402	2SD1450RTA	TRANSISTOR		D602, 603	MA165	DIODE	
Q403, 404	2SK381BCDTA	TRANSISTOR		D604	MA4051MTA	DIODE	
Q405, 406	2SC3311A1RTA	TRANSISTOR		D605, 606	MA165	DIODE	
Q407	UN4212TA	TRANSISTOR		D609	MA165	DIODE	
Q408	UN4111	TRANSISTOR		D614	MA700	DIODE	
Q409, 410	2SD1450RTA	TRANSISTOR		D615	MA165	DIODE	
Q411	UN4115	TRANSISTOR		D651-656	SLR-305LC	L. E. D.	
Q412	UN4212TA	TRANSISTOR		D657-661	SLR-305DC	L. E. D.	
Q413, 414	2SK381BCDTA	TRANSISTOR		D665, 666	SLR-305LC	L. E. D.	
Q501, 502	2SC3311A1RTA	TRANSISTOR		D667-670	SPR305MKTJM	L. E. D.	
Q551, 552	2SD1450RTA	TRANSISTOR		D671-673	SLR-305MC	L. E. D.	
Q553	2SC3327-A	TRANSISTOR		D681, 682	MA165	DIODE	
Q601	UN4213	TRANSISTOR		D701, 702	RL1M4003N02	DIODE	Δ
Q602-605	UN4215	TRANSISTOR		D703-706	RL154M11	DIODE	Δ
Q609-611	UN4216-S	TRANSISTOR		D707	MA4240H	DIODE	
Q651	UN4215	TRANSISTOR		D708	RL1M4003N02	DIODE	
Q652	UN4211	TRANSISTOR		D709, 710	RL1M4003N02	DIODE	Δ
Q653	UN4215	TRANSISTOR		D713	MA167	DIODE	Δ
Q654, 655	UN4211	TRANSISTOR		D715-717	MA165	DIODE	
Q656	UN4215	TRANSISTOR		D718, 719	MA4150M	DIODE	Δ
Q659, 660	2SB1030AQSTA	TRANSISTOR		D720	MA165	DIODE	
Q701	2SC3311A1RTA	TRANSISTOR		D721	MA4220MTA	DIODE	Δ
Q703	2SC3311A1RTA	TRANSISTOR		D724	MA165	DIODE	
Q704	2SD2037EFTA	TRANSISTOR	Δ	D725	MA4051-L	DIODE	Δ
Q705	KSB564ACYGTA	TRANSISTOR	Δ	D726	MA4062-H	DIODE	Δ
Q706	2SB1357EFTA	TRANSISTOR		D728	MA4082HTA	DIODE	Δ
Q707	DTB123YSTP	TRANSISTOR		D729	MA4075MTA	DIODE	Δ
Q708	2SD1762EF	TRANSISTOR	Δ	D730	MA4130M	DIODE	Δ
Q709	2SC3940AQSTA	TRANSISTOR	Δ	D731-733	MA4091HTA	DIODE	Δ
Q710	2SD2037EFTA	TRANSISTOR	Δ	D734	MTZJ4R7BTA	DIODE	Δ
Q715	2SC3940AQSTA	TRANSISTOR	Δ	D741	MA4091HTA	DIODE	Δ
Q716	2SD2037EFTA	TRANSISTOR	Δ	D801, 802	MA165	DIODE	
Q717	KSD471ACYGTA	TRANSISTOR	Δ	D804-814	MA165	DIODE	
Q741	2SD2037EFTA	TRANSISTOR	Δ	D815	MA700	DIODE	
Q801-804	UN4111	TRANSISTOR		D816	MA165	DIODE	
Q805-809	2SC3311A1RTA	TRANSISTOR		D971	RVDISS133TA	DIODE	
						DIODE(S)	
						IC PROTECTOR(S)	
D101	MA4051MTA	DIODE	Δ	ICP701	SRUN10	IC PROTECTOR	Δ
D102	MA165	DIODE					
D251	MA165	DIODE				VARIABLE RESISTOR(S)	
D261, 262	MA165	DIODE		VR201, 202	EVNDCAA03B24	PLAYBACK GAIN ADJ.	
D271	MA165	DIODE		VR203	EVNDCAA03B53	TAPE SPEED ADJ.	
D272	MTZJ4R7BTA	DIODE					
D273	MA4030MTA	DIODE				COIL(S)	
D274, 275	MA165	DIODE					
D400	MA4051-L	DIODE	Δ	L101	ELESNR68MA	COIL	
D401	MA4091HTA	DIODE	Δ	L103	ELEKTR47MA9	COIL	
D403, 404	MA165	DIODE		L104	ELEXT100KA9	COIL	
D491, 492	MA165	DIODE		L105, 106	RLQZB822KT-D	COIL	
D601	1SS291TA	DIODE					

Ref. No.	Part No.	Part Name & Description	Remarks	Ref. No.	Part No.	Part Name & Description	Remarks
L111	ELEXT1R0KA9	COIL		S652	EVQ21405R	TUNER, BAND, SET	
L151	SLM1B10M-1M	COIL	(EG)	S653	EVQ21405R	CD, MODE, PLAY	
L191	ELESNR68MA	COIL		S654	EVQ21405R	AUX, B. SKIP, DOWN	
L203, 204	RLQB103JT-Y	COIL		S655	EVQ21405R	TAPE, F. SKIP, UP	
L205	RL08C002M-T	COIL		S656	EVQ21405R	VOLUME DOWN(-)	
L206	RLQZB470KT-D	COIL		S657	EVQ21405R	VOLUME UP(+)	
L501, 502	SLQY07G-40	COIL	(EG)	S658	EVQ21405R	TIMER (PLAY/REC)	
L601	ELEXT2R2KA9	COIL		S671	EVQ21405R	OPEN/CLOSE	
L701	RLQZ271M	COIL	(EG)	S672	EVQ21405R	REC. START/STOP	
		TRANSFORMER(S)		S673	EVQ21405R	DOLBY NR	
PT701	RTP2M5B001	POWER TRANSFORMER	(E, EB, EG, GN) Δ	S674	EVQ21405R	DIRECTION	
PT701	RTP2M5G001	POWER TRANSFORMER	(GC) Δ	S675	EVQ21405R	SOUND MENU, BEEP	
		COMPONENT COMBINATION(S)		S677	EVQ21405R	EDIT	
Z102	RLI2Z006M-T	COMPONENT COMBINATION		S678	EVQ21405R	TAPE LENGTH(-)	
Z120	RAL0006	FM FRONT END	(E, EB, GC, GN)	S679	EVQ21405R	TAPE LENGTH(+)	
Z120	RAL0019	FM FRONT END	(EG)	S700	SSR187-1	VOLTAGE ADJ.	(GC) Δ
Z191	RLA6Z005M-T	COMPONENT COMBINATION		S790	RSH1A005	CLOSE DETECTOR	
Z600	RAT0010	BUZZER		S791	RSH1A005	OPEN DETECTOR	
Z601	RCDGP1U90XA	REMOTE SENSOR		S971	RSH1A89ZD-U	MODE	
		FILTER(S)		S972	RSH1A90YD-U	HALF	
CF201, 202	RLFFETWND01M	FILTER	(E, EB, GC, GN)	S973	RSH1A90YD-U	R. REC INH	
CF201	RLFFETNGD01L	FILTER	(EG)	S974	RSH1A90YD-U	F. REC INH	
CF202	RLFFETMGD01L	FILTER	(EG)	S975	RSH1A90YD-U	ATS/Cr02	
		OSCILLATOR(S)		S976	RSH1A90YD-U	ATS/METAL	
X101	RSXZ456KM07M	CERAMIC OSCILLATOR (456KHz)				RELAY(S)	
X102	RLFDFTD03M1	OSCILLATOR (10. 7MHz)		RL701	RSY0013M-0	RELAY	Δ
X103	SVQ49U722-S	OSCILLATOR (7. 2MHz)				CONNECTOR(S) AND SOCKET(S)	
X601	RSXD32K7F02	CERAMIC OSCILLATOR (32KHz)		CN101, 102	RJU063W07T	SOCKET (7P)	
X602	EF0EC4004T4	CERAMIC OSCILLATOR (4MHz)		CN202	RJS1A6604	SOCKET (4P)	
		DISPLAY TUBE(S)		CN203	SJSD1005	CONNECTOR (10P)	
FL601	RSLO156-F	DISPLAY TUBE		CN204	RJU005A012	SOCKET (12P)	
		FUSE(S)		CN205	RJU005W007	SOCKET (7P)	
F1	XBA2C06TB0	FUSE, 250V, T630mA	(E, EB, EG, GN) Δ	CN601	RJU003K008M1	SOCKET (8P)	
F1	XBA2C12TB0S	FUSE, 250V, T1. 25A	(GC) Δ	CN602-604	RJU003K010M1	SOCKET (10P)	
F2	XBA2C06TB0	FUSE, 250V, T630mA	(GC) Δ	CN606, 607	RJU066H05	SOCKET (5P)	
		SWITCH(ES)		CN608	RJU057W004	SOCKET (4P)	
S601	EVQ21405R	POWER		CN609	SJS0581BB	SOCKET (5P)	
S651	EVQ21405R	TIMER, MENU		CN701	RJS1A6605	SOCKET (5P)	
				CN801	RJS1A6823	SOCKET (23P)	
				CP101, 102	RJT063W07T	CONNECTOR (7P)	
				CP201	RJP5G18ZA	CONNECTOR (5P)	
				CP204	RJT005W012	CONNECTOR (12P)	
				CP205	RJT005W007	CONNECTOR (7P)	
				CP601	RJT003K008-1	CONNECTOR (8P)	
				CP602-604	RJT003K010-1	CONNECTOR (10P)	
				CP605	REZ0601	CONNECTOR UNIT (5P)	
				CP606, 607	RJT066H05A	CONNECTOR (5P)	
				CP608	RJT057W004-1	CONNECTOR (4P)	

Ref. No.	Part No.	Part Name & Description	Remarks	Ref. No.	Part No.	Part Name & Description	Remarks
CP609	SJT30549BB1	CONNECTOR (5P)				<SERVO P. C. B. >	
CP790	RJP6617ZA	CONNECTOR (6P)				INTEGRATED CIRCUIT(S)	
CP802	RJT029W06VT	CONNECTOR (6P)					
		GND PLATE (S)		IC701	AN8802SCE1V	SERVO AMP	
E100	RSC0081	GND PLATE		IC702	MN66271RA	SERVO PROCESSOR	
E201	SNE1004-1	GND PLATE		IC703	AN8389SE1	MOTOR DRIVE	
		FUSE HOLDER (S)				TRANSISTOR (S)	
FC1, 2	EYF52BC	FUSE HOLDER		Q701	2SB709S	TRANSISTOR	
FC3, 4	EYF52BC	FUSE HOLDER	(GC)			OSCILLATOR (S)	
		JACK (S) AND TERMINAL (S)		X701	RSXZ16M9M02T	OSCILLATOR (16.9344MHZ)	
JK101	RJH4202M	ANT TERMINAL	(E, EB, EG)			SWITCH(ES)	
JK101	RJH4405-1M	ANT TERMINAL	(GC, GN)	S701	RSM0006-P	REST DETECTOR	
JK401	SJF3068N	AUX				CONNECTOR(S) AND SOCKET(S)	
JK501	RJR0054EM	SPEAKERS TERMINAL		CN701A	RJU035T016-1	CONNECTOR (16P)	
JK601	RJJD7S2YA-C	HEADPHONES JACK		CN702	RJS1A6723-1Q	SOCKET (23P)	
JK701	SJS9236	AC INLET	(E, EB, EG, GC) Δ				
JK701	SJSD16	AC INLET	(GN) Δ				

### RESISTORS AND CAPACITORS

Notes : \*Capacity values are in microfarads (uF) unless specified otherwise, P=Pico-farads (pF) F=Farads (F)  
 \*Resistance values are in ohms, unless specified otherwise, 1K=1,000 (OHM), 1M=1,000k (OHM)

Ref. No.	Part No.	Values & Remarks	Ref. No.	Part No.	Values & Remarks	Ref. No.	Part No.	Values & Remarks
		RESISTORS	R128	ERDS2TJ820	1/4W 82	R209, 210	ERDS2TJ392T	1/4W 3.9K
			R129	ERDS2TJ473	1/4W 47K	R211, 212	ERDS2TJ222	1/4W 2.2K
			R130, 131	ERDS2TJ102	1/4W 1K	R213, 214	ERDS2TJ122	1/4W 1.2K
R103	ERDS2TJ271	1/4W 270 E, EB, GC, GN	R132	ERDS2TJ103	1/4W 10K	R215, 216	ERDS2TJ224T	1/4W 220K
R103	ERDS2TJ330	1/4W 330 EG	R133-137	ERDS2TJ102	1/4W 1K	R217, 218	ERDS2TJ104	1/4W 100K
R104	ERDS2TJ822	1/4W 8.2K	R138	ERDS2TJ103	1/4W 10K	R219-222	ERDS2TJ153	1/4W 15K
R105	ERDS2TJ471	1/4W 470	R139, 140	ERDS2TJ272T	1/4W 2.7K	R223, 224	ERDS2TJ562	1/4W 5.6K
R106	ERDS2TJ474	1/4W 470K	R141, 142	ERDS2TJ103	1/4W 10K	R225, 226	ERDS2TJ391	1/4W 390
R107	ERDS2TJ331	1/4W 330	R143, 144	ERDS2TJ222	1/4W 2.2K	R227, 228	ERDS2TJ682T	1/4W 6.8K
R108	ERDS2TJ474	1/4W 470K	R145, 146	ERDS2TJ102	1/4W 1K E, EB, GC, GN	R229, 230	ERDS2TJ561	1/4W 560
R109	ERDS2TJ331	1/4W 330	R145, 146	ERDS2TJ821	1/4W 820 EG	R231	ERDS2TJ683	1/4W 68K
R110	ERDS2TJ102	1/4W 1K E, EB, GC, GN	R147, 148	ERDS2TJ474	1/4W 470K	R232	ERDS2TJ335T	1/4W 3.3M
R110	ERDS2TJ822	1/4W 8.2K EG	R149	ERDS2TJ680T	1/4W 68	R233	ERDS2TJ332	1/4W 3.3K
R112	ERDS2TJ104	1/4W 100K	R171, 172	ERDS2TJ102	1/4W 1K	R234	ERDS2TJ474	1/4W 470K
R113	ERDS2TJ103	1/4W 10K	R173	ERDS2TJ471	1/4W 470	R235, 236	ERDS2TJ101	1/4W 100
R114	ERDS2TJ562	1/4W 5.6K	R175	ERDS2TJ102	1/4W 1K	R237	ERDS2TJ4R7T	1/4W 4.7
R115	ERDS2TJ561	1/4W 560	R176	ERDS2TJ391	1/4W 390	R238, 239	ERDS2TJ103	1/4W 10K
R116	ERDS2TJ102	1/4W 1K	R191	ERDS2TJ103	1/4W 10K	R241, 242	ERDS2TJ183T	1/4W 18K
R117	ERDS2TJ682T	1/4W 6.8K	R192	ERDS2TJ122	1/4W 1.2K	R243, 244	ERDS2TJ102	1/4W 1K
R118	ERDS2TJ562	1/4W 5.6K	R193	ERDS2TJ182	1/4W 1.8K	R245, 246	ERDS2TJ222	1/4W 2.2K
R119	ERDS2TJ392T	1/4W 3.9K E, EB, GC, GN	R194	ERDS2TJ122	1/4W 1.2K	R247, 248	ERDS2TJ821	1/4W 820
R119	ERDS2TJ822	1/4W 8.2K EG	R195	ERDS2TJ223	1/4W 22K	R249, 250	ERDS2TJ102	1/4W 1K
R120	ERDS2TJ473	1/4W 47K	R201	ERDS2TJ334	1/4W 330K	R251, 252	ERDS2TJ105T	1/4W 1M
R121	ERDS2TJ332	1/4W 3.3K	R202	ERDS2TJ104	1/4W 100K	R253, 254	ERDS2TJ102	1/4W 1K
R122	ERDS2TJ272T	1/4W 2.7K	R203, 204	ERDS2TJ123	1/4W 12K	R255, 256	ERDS2TJ471	1/4W 470
R124	ERDS2TJ391	1/4W 390	R205	ERDS2TJ221	1/4W 220	R257	ERDS2TJ433	1/4W 43K
R125, 126	ERDS2TJ152	1/4W 1.5K	R206	ERDS2TJ222	1/4W 2.2K	R258	ERDS2TJ101	1/4W 100
R127	ERDS2TJ103	1/4W 10K	R207, 208	ERDS2EJ121	1/4W 120	R259, 260	ERDS2TJ222	1/4W 2.2K

Ref. No.	Part No.	Values & Remarks	Ref. No.	Part No.	Values & Remarks	Ref. No.	Part No.	Values & Remarks
R261, 262	ERDS2TJ272T	1/4W 2.7K	R420	ERDS2TJ472	1/4W 4.7K	R518	ERDS2TJ124T	1/4W 120K
R263, 264	ERDS2TJ103	1/4W 10K	R421, 422	ERDS2TJ223	1/4W 22K	R519	ERDS2TJ563	1/4W 56K
R265, 266	ERDS2TJ272T	1/4W 2.7K	R423-426	ERDS2TJ103	1/4W 10K	R521, 522	ERDS2TJ104	1/4W 100K
R267, 268	ERDS2TJ472	1/4W 4.7K	R427, 428	ERDS2TJ153	1/4W 15K	R523, 524	ERDS2TJ272T	1/4W 2.7K
R269	ERDS2TJ124T	1/4W 120K	R429, 430	ERDS2TJ102	1/4W 1K	R551, 552	ERDS2TJ102	1/4W 1K
R270	ERDS2TJ102	1/4W 1K	R431, 432	ERDS2TJ103	1/4W 10K	R553, 554	ERDS2EJ121	1/4W 120
R271	ERD2FCVG120T	1/4W 12 $\Delta$	R433	ERDS2TJ561	1/4W 560	R555-558	ERDS2TJ563	1/4W 56K
R272	ERDS2TJ331	1/4W 330	R434	ERDS2EJ121	1/4W 120	R559, 560	ERDS2TJ103	1/4W 10K
R273	ERDS2TJ103	1/4W 10K	R435	ERDS2TJ334	1/4W 330K	R561-564	ERDS2EJ121	1/4W 120
R274	ERDS2TJ472	1/4W 4.7K	R436	ERDS2TJ105T	1/4W 1M	R565	ERDS2TJ105T	1/4W 1M
R275	ERDS2TJ562	1/4W 5.6K	R437-440	ERDS2TJ472	1/4W 4.7K	R570	ERDS2TJ560T	1/4W 56
R276, 277	ERDS2TJ103	1/4W 10K	R441, 442	ERDS2TJ103	1/4W 10K	R571	ERDS2TJ223	1/4W 22K
R278	ERDS2TJ4R7T	1/4W 4.7	R445, 446	ERDS2TJ472	1/4W 4.7K	R572	ERDS2TJ153	1/4W 15K
R279, 280	ERDS2TJ472	1/4W 4.7K	R453	ERDS1FVJ151T	1/2W 150 $\Delta$	R573, 574	ERDS2TJ122	1/4W 1.2K
R281	ERDS2TJ332	1/4W 3.3K	R455, 456	ERDS2TJ104	1/4W 100K	R600, 601	ERDS2TJ102	1/4W 1K
R282	ERDS2TJ1R0	1/4W 1.0	R457	ERDS2TJ272T	1/4W 2.7K	R602	ERDS2TJ473	1/4W 47K
R283, 284	ERDS2TJ104	1/4W 100K	R459	ERDS2TJ101	1/4W 100	R603	ERDS2TJ334	1/4W 330K
R285	ERDS2TJ102	1/4W 1K	R460	ERDS2TJ105T	1/4W 1M	R604, 605	ERDS2TJ102	1/4W 1K
R287, 288	ERDS2TJ272T	1/4W 2.7K	R461, 462	ERDS2TJ472	1/4W 4.7K	R606	ERDS2TJ224T	1/4W 220K
R289	ERDS2TJ103	1/4W 10K	R463, 464	ERDS2TJ152	1/4W 1.5K	R607	ERDS2TJ104	1/4W 100K
R291	ERDS2TJ472	1/4W 4.7K	R465	ERDS2TJ102	1/4W 1K	R610	ERDS2TJ564	1/4W 560K
R292	ERDS2TJ103	1/4W 10K	R466	ERDS2TJ105T	1/4W 1M	R611-616	ERDS2TJ101	1/4W 100
R293	ERDS2TJ222	1/4W 2.2K	R467	ERDS2TJ474	1/4W 470K	R617	ERDS2TJ222	1/4W 2.2K
R294-296	ERDS2TJ102	1/4W 1K	R468	ERDS2TJ102	1/4W 1K	R618	ERDS2TJ150T	1/4W 15
R297	ERDS2TJ472	1/4W 4.7K	R469	ERDS2TJ334	1/4W 330K	R621-623	ERDS2TJ102	1/4W 1K
R298, 299	ERDS2TJ103	1/4W 10K	R470	ERDS2TJ392T	1/4W 3.9K	R624, 625	ERDS2TJ103	1/4W 10K
R300	ERDS2TJ681	1/4W 680	R471, 472	ERDS2EJ121	1/4W 120	R626-629	ERDS2TJ104	1/4W 100K
R301, 302	ERDS2TJ122	1/4W 1.2K	R473	ERDS2TJ105T	1/4W 1M	R631	ERDS2TJ102	1/4W 1K
R303, 304	ERDS2TJ222	1/4W 2.2K	R474	ERDS2TJ104	1/4W 100K	R632	ERDS2TJ103	1/4W 10K
R305, 306	ERDS2TJ122	1/4W 1.2K	R475	ERDS2TJ102	1/4W 1K	R635-638	ERDS2TJ101	1/4W 100
R307, 308	ERDS2TJ104	1/4W 100K	R476	ERDS2TJ473	1/4W 47K	R639, 640	ERDS2TJ104	1/4W 100K
R351	ERDS2TJ473	1/4W 47K	R477	ERDS2TJ104	1/4W 100K	R641	ERDS2TJ103	1/4W 10K
R352	ERDS2TJ472	1/4W 4.7K	R479, 480	ERDS2TJ104	1/4W 100K	R642	ERDS2TJ102	1/4W 1K
R353	ERDS2TJ152	1/4W 1.5K	R481, 482	ERDS2TJ822	1/4W 8.2K	R643, 644	ERDS2TJ103	1/4W 10K
R354, 355	ERDS2TJ473	1/4W 47K	R485, 486	ERDS2TJ104	1/4W 100K	R645	ERDS2TJ104	1/4W 100K
R356	ERDS2TJ472	1/4W 4.7K	R487, 488	ERDS2TJ472	1/4W 4.7K	R646	ERDS2TJ561	1/4W 560
R357	ERDS2TJ103	1/4W 10K	R489, 490	ERDS2TJ104	1/4W 100K	R647	ERDS2TJ104	1/4W 100K
R358	ERDS2TJ2R7T	1/4W 2.7	R491, 492	ERDS2TJ102	1/4W 1K	R651, 652	ERDS2TJ102	1/4W 1K
R359, 360	ERDS2TJ102	1/4W 1K	R493	ERDS2TJ473	1/4W 47K	R653	ERDS2TJ122	1/4W 1.2K
R361	ERDS2TJ2R7T	1/4W 2.7	R494	ERDS2TJ474	1/4W 470K	R654	ERDS2TJ182	1/4W 1.8K
R362	ERDS2TJ123	1/4W 12K	R495	ERDS2TJ105T	1/4W 1M	R655	ERDS2TJ222	1/4W 2.2K
R363	ERDS2TJ182	1/4W 1.8K	R497, 498	ERDS2TJ333	1/4W 33K	R656	ERDS2TJ272T	1/4W 2.7K
R364	ERDS2TJ221	1/4W 220	R499, 500	ERDS2TJ123	1/4W 12K	R657	ERDS2TJ472	1/4W 4.7K
R400	ERDS2TJ122	1/4W 1.2K	R501, 502	ERDS2TJ104	1/4W 100K	R658	ERDS2TJ821	1/4W 820
R401, 402	ERDS2TJ153	1/4W 15K	R503, 504	ERDS2TJ681	1/4W 680	R659	ERDS2TJ391	1/4W 390
R403, 404	ERDS2TJ682T	1/4W 6.8K	R505-508	ERDS2TJ104	1/4W 100K	R660	ERDS2TJ101	1/4W 100
R405, 406	ERDS2TJ153	1/4W 15K	R509	ERD25FJ470	1/4W 47 $\Delta$	R661	ERDS2TJ391	1/4W 390
R407-410	ERDS2TJ223	1/4W 22K	R511	ERDS2TJ563	1/4W 56K	R662	ERDS2TJ561	1/4W 560
R411, 412	ERDS2TJ683	1/4W 68K	R512	ERDS2TJ103	1/4W 10K	R663	ERDS2TJ681	1/4W 680
R413, 414	ERDS2TJ273	1/4W 27K	R513, 514	ERDS2TJ100	1/4W 10 EG	R664	ERDS2TJ391	1/4W 390
R415, 416	ERDS2TJ223	1/4W 22K	R515, 516	ERDS1FVJ100T	1/2W 10 $\Delta$	R665	ERDS2TJ681	1/4W 680
R417-419	ERDS2TJ393	1/4W 39K	R517	ERDS2TJ823T	1/4W 82K	R666	ERDS2TJ391	1/4W 390



Ref. No.	Part No.	Values & Remarks	Ref. No.	Part No.	Values & Remarks	Ref. No.	Part No.	Values & Remarks
R667	ERDS2TJ681	1/4W 680	R801	ERDS2TJ102	1/4W 1K	C122	ECEA1HKA2R2B	50V 2.2U
R668	ERDS2TJ391	1/4W 390	R802	ERDS2TJ104	1/4W 100K	C123	ECEA1HKA010B	50V 1U
R669	ERDS2TJ681	1/4W 680	R803	ERDS2TJ102	1/4W 1K	C124	ECBT1H102KB5	50V 1000P
R670	ERDS2TJ391	1/4W 390	R804, 805	ERDS2TJ103	1/4W 10K	C125	ECBT1H150JC5	50V 15P
R671	ERDS2TJ181T	1/4W 180	R806, 807	ERDS2TJ473	1/4W 47K	C126	ECBT1H473ZF5	50V 0.047U
R672, 673	ERDS2TJ102	1/4W 1K	R808	ERDS2TJ822	1/4W 8.2K	C127	ECEA1CKA220B	16V 22U
R674	ERDS2TJ122	1/4W 1.2K	R809	ERDS2TJ103	1/4W 10K	C128	ECBT1C103NS5	16V 0.01U
R675	ERDS2TJ182	1/4W 1.8K	R810, 811	ERDS2TJ272T	1/4W 2.7K	C129, 130	ECEA0JKA101B	6.3V 100U
R676	ERDS2TJ222	1/4W 2.2K	R812	ERDS2TJ102	1/4W 1K	C131	ECBT1C103NS5	16V 0.01U
R677	ERDS2TJ272T	1/4W 2.7K	R813, 814	ERDS2TJ272T	1/4W 2.7K	C132	ECBT1H102KB5	50V 1000P
R678	ERDS2TJ472	1/4W 4.7K	R815, 816	ERDS2TJ103	1/4W 10K	C133	ECBT1H150JC5	50V 15P
R679	ERDS2TJ682T	1/4W 6.8K	R817, 818	ERDS2TJ102	1/4W 1K	C134	ECBT1H180JC5	50V 18P
R681	ERDS2TJ331	1/4W 330	R819	ERDS2TJ103	1/4W 10K	C135, 136	ECBT1C822MS5	16V 8200P
R682-684	ERDS2TJ104	1/4W 100K	R820	ERDS2TJ472	1/4W 4.7K	C137, 138	ECBT1H271KB5	50V 270P
R685	ERDS2TJ221	1/4W 220	R821	ERDS2TJ102	1/4W 1K	C139, 140	ECFR1E562KR	25V 5600P E, EB, GC, GN
R687, 688	ERDS2TJ102	1/4W 1K	R822-824	ERDS2TJ104	1/4W 100K	C139, 140	ECFR1E822KR	25V 8200P EG
R689, 690	ERDS2TJ103	1/4W 10K	R825	ERDS2TJ103	1/4W 10K	C141-144	ECEA1HKA010B	50V 1U
R692-694	ERDS2TJ103	1/4W 10K	R826	ERDS2TJ182	1/4W 1.8K	C145	ECBT1H220JC5	50V 22P
R701, 702	ERDS2TJ1R0	1/4W 1.0	R827, 828	ERDS2TJ122	1/4W 1.2K	C146	ECBT1H331KB5	50V 330P
R703	ERDS2TJ222	1/4W 2.2K	R829	ERDS2TJ182	1/4W 1.8K	C147	ECBT1H102KB5	50V 1000P
R705, 706	ERDS2TJ472	1/4W 4.7K	R830-832	ERDS2TJ122	1/4W 1.2K	C148	ECBT1C103NS5	16V 0.01U
R707	ERDS1FVJ2R2T	1/2W 2.2 $\Delta$	R833	ERDS2TJ182	1/4W 1.8K	C149	ECBT1H104ZF5	50V 0.1U
R708	ERDS1FVJ101T	1/2W 100 $\Delta$	R834	ERDS2TJ122	1/4W 1.2K	C171	ECBT1C103NS5	16V 0.01U
R709, 710	ERDS2TJR47T	1/4W 0.47	R835	ERDS2TJ472	1/4W 4.7K	C172	ECBT1H331KB5	50V 330P
R711	ERDS2TJ563	1/4W 56K	R836-838	ERDS2TJ222	1/4W 2.2K	C173	ECEA1CKA220B	16V 22U
R712	ERDS2TJ333	1/4W 33K	R839-845	ERDS2TJ103	1/4W 10K	C174	ECEA1CKA100B	16V 10U E, EB, GC, GN
R713	ERDS2TJ102	1/4W 1K	R851, 852	ERDS2TJ822	1/4W 8.2K	C174	ECEA1CKA101B	16V 100U EG
R714	ERD2FCVJ4R7T	1/4W 4.7 $\Delta$	R853, 854	ERDS2TJ472	1/4W 4.7K	C181	ECBT1H471KB5	50V 470P EG
R715	ERDS2TJ681	1/4W 680	R855, 856	ERDS2TJ153	1/4W 15K	C201, 202	ECBT1H102KB5	50V 1000P
R716	ERDS2TJ560T	1/4W 56	R857, 858	ERDS2TJ223	1/4W 22K	C204	ECFR1C223MR	16V 0.022U
R717	ERDS2TJ332	1/4W 3.3K				C208	ECEA1AKA221Q	10V 220U
R718	ERDS2TJ152	1/4W 1.5K			CAPACITORS	C209	ECEA1AKA101B	10V 100U
R719	ERDS2EJ121	1/4W 120				C211, 212	ECBT1H561KB5	50V 560P
R720	ERD2FCVJ4R7T	1/4W 4.7 $\Delta$	C100	ECBT1E103ZF	25V 0.01U	C213, 214	ECEA0JKA470B	6.3V 47U
R722	ERDS1FVJ331T	1/2W 330 $\Delta$	C101	ECBT1C103NS5	16V 0.01U	C215, 216	ECFR1C333JR	16V 0.033U
R723	ERDS1FVJ680T	1/2W 68 $\Delta$	C103	ECBT1C103NS5	16V 0.01U	C217, 218	ECEA1HKA010B	50V 1U
R724	ERDS2TJ221	1/4W 220	C104, 105	ECBT1H102KB5	50V 1000P	C219, 220	ECEA1EKA4R7B	25V 4.7U
R726	ERDS2TJ332	1/4W 3.3K	C106	ECBT1C103NS5	16V 0.01U	C221, 222	ECEA1HKA010B	50V 1U
R727	ERDS1FVJ680T	1/2W 68 $\Delta$	C107	ECBT1H473ZF5	50V 0.047U E, EB, GC, GN	C223, 224	ECBT1H102KB5	50V 1000P
R728	ERDS2TJ152	1/4W 1.5K	C107	ECBT1H104ZF5	50V 0.1U EG	C225, 226	ECFR1E104KR	25V 0.1U
R729	ERDS2TJ471	1/4W 470	C108	ECBT1H100JC5	50V 10P	C227, 228	ECBTOJ153MS5	6.3V 0.015U
R730	ERDS2TJ101	1/4W 100	C109, 110	ECBT1C103NS5	16V 0.01U	C229, 230	ECBT1C152KR5	16V 1500P
R731	ERDS1FVJ100T	1/2W 10 $\Delta$	C111	ECEA1EKA4R7B	25V 4.7U	C231, 232	ECBT1C222KR5	16V 2200P
R732	ERDS2TJ152	1/4W 1.5K	C112	ECBT1C103NS5	16V 0.01U	C233, 234	ECEA1EKA4R7B	25V 4.7U
R733	ERDS2TJ561	1/4W 560	C113	ECBT1H102KB5	50V 1000P	C235, 236	ECBT1H102KB5	50V 1000P
R734	ERDS2EJ121	1/4W 120	C114	ECEA1HKA3R3B	50V 3.3U	C237, 238	ECBT1H561KB5	50V 560P
R737, 738	ERDS2TJ101	1/4W 100	C115	ECEA1CKA100B	16V 10U	C239	ECEA1HKA2R2B	50V 2.2U
R739	ERDS2TJ103	1/4W 10K	C116	ECBT1C822MS5	16V 8200P	C240	ECEA1CKA100B	16V 10U
R741	ERDS2TJ152	1/4W 1.5K	C117	ECQB1H821JF3	50V 820P E, EB, GC, GN	C241	ECEA1HKA0R1B	50V 0.1U
R743-746	ERDS1FVJ220T	1/2W 22 $\Delta$	C117	ECQP2A221JZT	100V 220P EG	C242	ECFR1C223MR	16V 0.022U
R761, 762	ERD2FCVJ4R7T	1/4W 4.7 $\Delta$	C118, 119	ECFR1E103KR	25V 0.01U	C243, 244	ECEA1CKA100B	16V 10U
R800	ERDS2TJ471	1/4W 470	C120, 121	ECEA1HKA010B	50V 1U	C246	ECEA1CKA100B	16V 10U

Ref. No.	Part No.	Values & Remarks	Ref. No.	Part No.	Values & Remarks	Ref. No.	Part No.	Values & Remarks
C247, 248	ECBT1C103MS5	16V 0.01U	C445, 446	ECEA1HKA2R2B	50V 2.2U	C622, 623	ECBT1H561KB5	50V 560P
C250	ECEA1CKA100B	16V 10U	C447	ECEA1EKA4R7B	25V 4.7U	C624, 625	ECEA1AKA330B	10V 33U
C251, 252	ECEA1HKA010B	50V 1U	C448, 449	ECEA1CKA100B	16V 10U	C631, 632	ECBT1E223ZF	25V 0.022U
C253, 254	ECBT1H331KB5	50V 330P	C450	ECEA1AKA101B	10V 100U	C649, 650	ECBT1H561KB5	50V 560P
C255, 256	ECEA1CKA100B	16V 10U	C451, 452	ECEA1HKA68B	50V 0.68U	C701	ECEA1EU222B	25V 2200U $\Delta$
C257, 258	ECBT1H271KB5	50V 270P	C454	ECEA1EKA100B	25V 10U	C702, 703	ECEA1EU472YB	25V 4700U $\Delta$
C259, 260	ECBT1C332KR5	16V 3300P	C455	ECEA1HKA010B	50V 1U	C704, 705	ECKR1H103ZF5	50V 0.01U
C261	ECEA1CKA101B	16V 100U	C456	ECEA1EKA100B	25V 10U	C706	ECQV1H104JM3	50V 0.1U
C262	ECA1AM471B	10V 470U	C459, 460	ECEA1CKA100B	16V 10U	C708	ECEA1VU220	35V 22U
C263, 264	ECEA50M1RB	50V 1U	C461, 462	ECBT1H101KB5	50V 100P EG	C710, 711	ECKR1H103ZF5	50V 0.01U
C265, 266	ECEA1CKA100B	16V 10U	C463, 464	ECBT1H270J5	50V 27P	C713	ECA1HM470B	50V 47U $\Delta$
C267, 268	ECEA1HKA68B	50V 0.68U	C469, 470	ECBT1E103ZF	25V 0.01U	C714	ECBT1E103ZF	25V 0.01U
C269, 270	ECEA1EKA4R7B	25V 4.7U	C471, 472	ECBT1H104ZF5	50V 0.1U	C716	ECEA1HKA010B	50V 1U $\Delta$
C271	ECEA0JKA470B	6.3V 47U	C481	ECBT1H101KB5	50V 100P	C717	ECEA0JKA101B	6.3V 100U
C273	ECBT1C103MS5	16V 0.01U	C482	ECBT1H561KB5	50V 560P	C718, 719	ECBT1E103ZF	25V 0.01U
C274	ECEA1HKA010B	50V 1U	C483	ECBT1H101KB5	50V 100P	C720, 721	ECA1EM101B	25V 100U
C275	ECEA1CKA101B	16V 100U	C490	ECEA1HKA010E	50V 1U	C722	ECKR1H103ZF5	50V 0.01U
C276	ECQB1H223JF3	50V 0.022U	C491, 492	ECFR1C333JR	16V 0.033U	C723	ECEA1VU220	35V 22U
C277, 278	ECBT1H102KB5	50V 1000P	C501, 502	ECEA1HKA2R2B	50V 2.2U	C724	ECEA1HKA010B	50V 1U
C279, 280	ECFR1C103KR	16V 0.01U	C503, 504	ECEA1CKA100B	16V 10U	C725	ECKR1H103ZF5	50V 0.01U
C281	ECBT1C103MS5	16V 0.01U	C505, 506	ECBT1H102KB5	50V 1000P	C726	ECEA1EKA4R7B	25V 4.7U
C282	ECEA1AKA221Q	10V 220U	C507, 508	ECBT1H8R2KC5	50V 8.2P	C727	ECEA1EU101	25V 100U
C283	ECQV1H474JM3	50V 0.47U	C509, 510	ECBT1H331KB5	50V 330P	C728	ECEA1EKA4R7B	25V 4.7U
C284	ECQP2E681JZT	250V 680P	C511	ECBT1E223ZF	25V 0.022U	C729	ECEA1CKA101B	16V 100U
C285	ECQP2E562JZT	250V 5600P	C512	ECEA0JKA470B	6.3V 47U	C730	ECQB1H223JF3	50V 0.022U
C289	ECQP2E821JZT	250V 820P	C513	ECEA1CKA100B	16V 10U	C731	ECEA1AKA101B	10V 100U
C290	ECEA1EU470	25V 47U	C515, 516	ECBT1H104ZF5	50V 0.1U	C732	ECBT1E223ZF	25V 0.022U
C291	ECBT1H101KB5	50V 100P	C517	ECEA0JKA101B	6.3V 100U	C733	ECEA1AKA101B	10V 100U
C292	ECBT1H331KB5	50V 330P	C519, 520	ECBT1E223ZF	25V 0.022U EG	C734	ECKR1H103ZF5	50V 0.01U
C293	ECBT1H104ZF5	50V 0.1U	C521, 522	ECBT1H102KB5	50V 1000P	C735	ECEA1AKA101B	10V 100U
C294	ECEA1HKA2R2B	50V 2.2U	C523, 524	ECFR1C333JR	16V 0.033U	C736	ECQB1H223JF3	50V 0.022U
C295	ECEA1CKA101B	16V 100U	C541	ECBT1E223ZF	25V 0.022U	C737	ECEA1CKA101B	16V 100U
C296	ECBT1C103MS5	16V 0.01U	C551, 552	ECEA1HKA2R2B	50V 2.2U	C741	ECBT1E103ZF	25V 0.01U
C301, 302	ECEA0JKA470B	6.3V 47U	C553, 554	ECBT1H101KB5	50V 100P	C790	ECA1AKF820E	10V 82U
C303, 304	ECEA1HKA2R2B	50V 2.2U	C555, 556	ECBT1H330J5	50V 33P	C803	ECBT1H104ZF5	50V 0.1U
C401, 402	ECBT1H101KB5	50V 100P EG	C557, 558	ECEA1HKA2R2B	50V 2.2U	C804	ECBT1H101KB5	50V 100P
C405	ECEA1CKA100B	16V 10U	C559, 560	ECEA1CKA100B	16V 10U	C805	ECBT1H102KB5	50V 1000P
C407, 408	ECEA1HKA2R2B	50V 2.2U	C561, 562	ECBT1E103ZF	25V 0.01U	C806, 807	ECBT1C472KR5	16V 4700P
C411, 412	ECBT1E103ZF	25V 0.01U	C601	ECEA0JU102	6.3V 1000U	C808, 809	ECBT1H102KB5	50V 1000P
C413	ECFR1C823MR	16V 0.082U	C602	ECEA1AKA101B	10V 100U	C810	ECBT1H330J5	50V 33P
C414	ECFR1C223MR	16V 0.022U	C603	ECBT1E103ZF	25V 0.01U	C811	ECBT1H102KB5	50V 1000P
C415, 416	ECBT1H270J5	50V 27P	C604	ECBT1C103MS5	16V 0.01U	C812	ECEA1AGE471B	10V 470U
C417, 418	ECEA1HKA2R2B	50V 2.2U	C605	ECEA1HKA010B	50V 1U	C813	ECBT1E103ZF	25V 0.01U
C419, 420	ECEA1CKA100B	16V 10U	C606	ECBT1E103ZF	25V 0.01U	C814-816	ECBT1H102KB5	50V 1000P
C421, 422	ECBT1C332KR5	16V 3300P	C607	ECBT1H150JC5	50V 15P	C835	ECEA0JKA470B	6.3V 47U
C423, 424	ECFR1C823MR	16V 0.082U	C608	ECBT1H220JC5	50V 22P	C836	ECEA1EKA4R7B	25V 4.7U
C425, 426	ECFR1C473JR	16V 0.047U	C609	ECEA1HKA010B	50V 1U			
C427-430	ECEA1CKA100B	16V 10U	C610, 611	ECBT1E103ZF	25V 0.01U			<SERVO P. C. B. >
C435, 436	ECEA1HKA010B	50V 1U	C612	ECEA1AKA101B	10V 100U			RESISTORS
C437, 438	ECBT1H101KB5	50V 100P	C613	ECBT1E103ZF	25V 0.01U			
C441, 442	ECEA1HKA2R2B	50V 0.22U	C614	ECBT1H104ZF5	50V 0.1U	R701	ERJ6GEYJ100	1/10W 10
C443, 444	ECBT1H101KB5	50V 100P	C616	ECEA1HKA2R2B	50V 2.2U	R702	ERJ6GEYJ471V	1/10W 470



943

Ref. No.	Part No.	Values & Remarks	Ref. No.	Part No.	Values & Remarks	Ref. No.	Part No.	Values & Remarks
R703	ERJ6GEYJ823	1/10W 82K	R741-743	ERJ6GEYJ562V	1/10W 5.6K	C713	ECUV1C104MBM	16V 0.1U
R704	ERJ6GEYJ102A	1/10W 1K	R744	ERJ6GEYJ103V	1/10W 10K	C714	ECEAJKA1011	6.3V 100U
R705	ERJ6GEYJ103V	1/10W 10K	R745	ERJ6GEYJ155V	1/10W 1.5M	C715	ECEAJKA4701	6.3V 47U
R706	ERJ6GEYJ102A	1/10W 1K				C716	ECUE1H561KBN	50V 560P
R707	ERJ6GEYJ473V	1/10W 47K			CHIP JUMPERS	C717	ECUZ1E104MBN	25V 0.1U
R708	ERJ6GEYJ104V	1/10W 100K				C718, 719	ECUV1C224KBM	16V 0.22U
R709	ERJ6GEYJ683V	1/10W 68K	RJ701-704	ERJ8GEYOR00A	CHIP JUMPER	C721, 722	ECUE1H100DCN	50V 10P
R711	ERJ6GEYJ154V	1/10W 150K	RJ707-717	ERJ8GEYOR00A	CHIP JUMPER	C723	ECEAJKA221I	10V 220U
R712	ERJ6GEYJ471V	1/10W 470	RJ721	ERJ6GEYOR00A	CHIP JUMPER	C724	ECUV1C104MBM	16V 0.1U
R714	ERJ6GEYOR00A	1/10W 0.00	RJ724-726	ERJ6GEYOR00A	CHIP JUMPER	C725, 726	ECUE1H102KBN	50V 1000P
R717-720	ERJ6GEYJ102A	1/10W 1K				C727, 728	ECEAJHPK010I	50V 1U
R721	ERJ8GEYJ101V	1/8W 100			CAPACITORS	C730	ECUZ1E104MBN	25V 0.1U
R722	ERJ6GEYJ473V	1/10W 47K				C731, 732	ECA05SD151I	6.3V 150U
R723	ERJ6GEYJ182V	1/10W 1.8K	C701	ECEAJKA220	6.3V 22U	C733	ECUZ1E104MBN	25V 0.1U
R724	ERJ6GEYJ333V	1/10W 33K	C702	ECEAJHKA010I	50V 1U	C734	ECEAJKA221I	10V 220U
R725	ERJ6GEYJ472V	1/10W 4.7K	C703	ECEAJKA1011	6.3V 100U	C735-737	ECUZNE104MBN	25V 0.1U
R726	ERJ6GEYJ473V	1/10W 47K	C704	ECUZ1E104MBN	25V 0.1U	C738	ECUV1C154KBN	16V 0.15U
R727	ERJ6GEYJ103V	1/10W 10K	C705	ECEAJHKA010I	50V 1U	C742	ECUV1E273KBN	25V 0.027U
R728	ERJ6GEYJ392V	1/10W 3.9K	C706	ECUE1H101JCN	50V 100P	C743	ECUZNE104MBN	25V 0.1U
R730	ERJ6GEYJ331V	1/10W 330	C707	ECUV1E273KBN	25V 0.027U	C744	ECUE1E822KBN	25V 8200P
R731	ERJ6GEYJ392V	1/10W 3.9K	C708	ECUE1H472KBN	50V 4700P	C745	ECUE1C473MBN	16V 0.047U
R734-736	ERJ6GEYJ101V	1/10W 100	C709	ECUE1C473KBN	16V 0.047U	C746	ECUE1H050DCN	50V 5P
R738	ERJ6GEYJ223V	1/10W 22K	C710	ECUE1H152KBN	50V 1500P	C747	ECUE1H222KBN	50V 2200P
R739	ERJ6GEYJ681V	1/10W 680	C711, 712	ECUZ1E104MBN	25V 0.1U	C748	ECUV1H471KBM	50V 470P

## PACKAGING

• For (E, EB, EG) areas.

• For (GC, GN) areas.

• For (E) area only.

